

# Ионекс

Тольятти: (8482) 25-82-40, (8482) 25-82-85, (927) 775-49-65, (906) 128-12-68, [tlt@ionexedm.ru](mailto:tlt@ionexedm.ru)

Москва: (499) 782-61-17, (916) 627-56-24, (926) 300-12-42, [msk@ionexedm.ru](mailto:msk@ionexedm.ru)

Томск: (3822) 23-16-80, (909) 543-16-80, [tomsk@ionexedm.ru](mailto:tomsk@ionexedm.ru)

[www.ionexedm.ru](http://www.ionexedm.ru)

## CLAMPING SYSTEM ITS

Pneumatic holders are made in version with or without air-cleaning of Z axis reference areas.

Letter „C“ in the name of the holder means automatic cleaning.

It is necessary to use hand-operated valve PM5C to control.



**WPU100D-ITS**

Pneumatic holder ITS50/100  
Fitting on a machine table with screws M10, pitch 125mm  
Standard control: air-gun  
Dimensions: 150x110x56mm  
Clamping power: 9000N  
Material INOX, hardened 54°HRC

Available in version C  
(WPU100DC-ITS)

Accessories: hand-operated valve PM5 or PM5C



**PM5**



**PM5C**

Manual valve PM5 / PM5C for pneumatic holders



### **WPU56D-ITS**

Pneumatic holder ITS50  
Fitting on a machine table with screws M10, pitch 80mm  
Standard control: air-gun  
Dimensions: 110x80x66mm  
Clamping power: 4000N  
Material INOX, hardened 54 °HRC

Accessories: hand-operated valve PM5 or PM5C



### **WPU56DC-ITS**

Pneumatic holder ITS50 with air-cleaning of Z axis reference  
Fitting on a machine table with screws M10, pitch 80mm  
Standard control: manual valve  
Dimensions: 110x80x66mm  
Clamping power: 4000N  
Material INOX, hardened 54 °HRC



### **WPU100-90- ITS**

Vertical-horizontal pneumatic holder ITS50/100  
Distance of horizontal axis from the base is 60mm  
Error of clamps' perpendicularity axis up to 0,005/100mm  
Standard control: air-gun  
Fitting on a machine table: clamps  
Dimensions: 61x100x115mm  
Clamping power: 2x9000N  
Material INOX, hardened 54 °HRC

Available in version C  
(WPU100-90C-ITS)

Accessories: hand-operated valve PM5 or PM5C



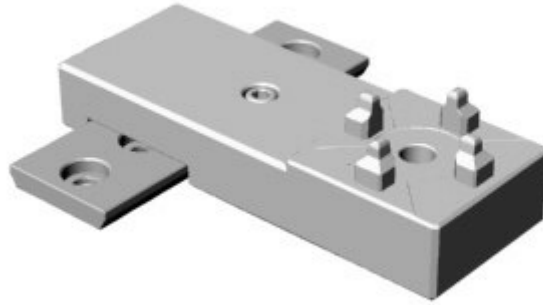
# *Ионекс*

**Тольятти:** (8482) 25-82-40, (8482) 25-82-85, (927) 775-49-65, (906) 128-12-68, [tlt@ionexedm.ru](mailto:tlt@ionexedm.ru)

**Москва:** (499) 782-61-17, (916) 627-56-24, (926) 300-12-42, [msk@ionexedm.ru](mailto:msk@ionexedm.ru)

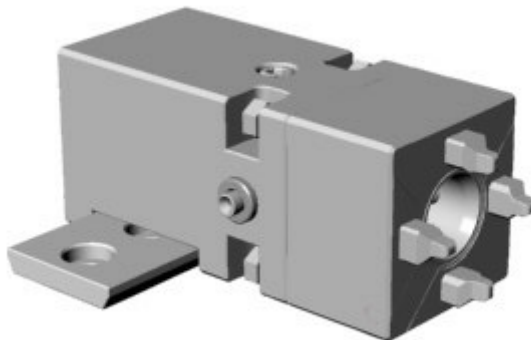
**Томск:** (3822) 23-16-80, (909) 543-16-80, [tomsk@ionexedm.ru](mailto:tomsk@ionexedm.ru)

**[www.ionexedm.ru](http://www.ionexedm.ru)**



### **WMU56V-ITS SET**

Vertical manual holder ITS50 for WEDM  
Direct fitting on a machine table with screws M8, pitch 25mm  
Dimensions: 152x56x26mm  
Material INOX, hardened 54 °HRC



### **WPU56H-ITS SET**

Horizontal pneumatic holder ITS50 for WEDM  
Direct fitting on a machine table with screws M8, pitch 25mm  
Standard control: air-gun  
Dimensions: 126x56x56mm  
Clamping power: 4000N  
Material INOX, hardened 54 °HRC

Available in version C  
(WPU56HC-ITS)

Accessories: hand-operated valve PM5 or PM5C

## MEASURING POINTERS FOR EDM



### WSK-ITS

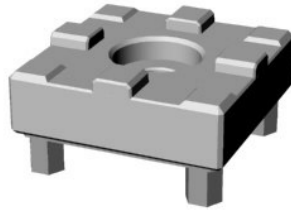
Pointers with gentle setting to zero and changeable ball contacts  
Material INOX, hardened 54 °HRC  
Dimensions: 54x54x130



### MS4

Measuring ball contact for WSK  
Contact stem is made of hardmetal  
Delivered diameters: 2,4,6 mm.  
Dimension: L=130  
Material INOX

## ADAPTERS

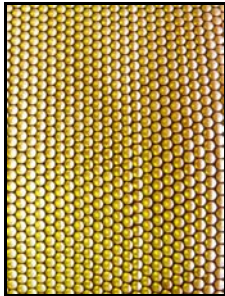


### WR54ITS-MACRO

Adapter from system ITS into system MACRO

Dimensions: 54x54x30

Material INOX, hardened 54°HRC



# Ионекс

Тольятти: (8482) 25-82-40, (8482) 25-82-85, (927) 775-49-65, (906) 128-12-68, [tlt@ionexedm.ru](mailto:tlt@ionexedm.ru)

Москва: (499) 782-61-17, (916) 627-56-24, (926) 300-12-42, [msh@ionexedm.ru](mailto:msh@ionexedm.ru)

Томск: (3822) 23-16-80, (909) 543-16-80, [tmsk@ionexedm.ru](mailto:tmsk@ionexedm.ru)

[www.ionexedm.ru](http://www.ionexedm.ru)

## CLAMPING PINS ITS



### WUC-F/A

Clamping pin ITS

Dimension: d20x45

Material INOX, hardened 50°HRC

## HOLDERS WQM

for electrodes of square profile 15x15 or 25x25



**WQM15-ITS**

Holder for profile 15x15mm  
Axis distance of the quadrant's wall is  $7,50 \pm 0,003$   
Reference height Z is  $40,00 \pm 0,003$   
Material INOX, hardened 54°HRC



**WQM25-ITS**

Holder for profile 25x25mm  
Axis distance of the quadrant's wall is  $12,50 \pm 0,003$   
Reference height Z is  $40,00 \pm 0,003$   
Material INOX, hardened 54°HRC

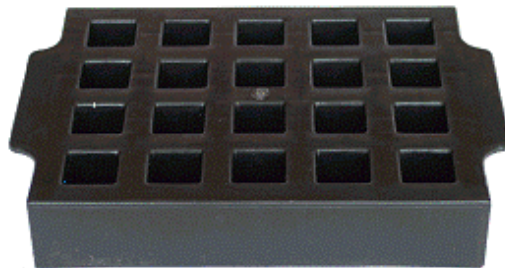


**Copper semi-products for holders WQM**

Dimensions 15x15x75 or 25x25x90

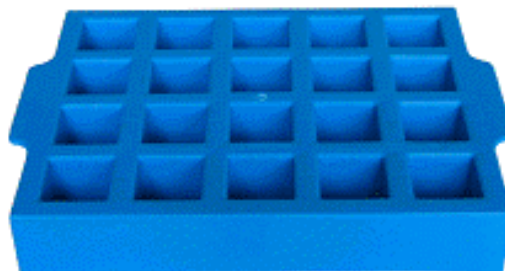


**Graphite semi-products for holders WQM**



**E-BOX20**

Plastic box for 20pc of electrodes 15x15



**E-BOX25**

Plastic box for 20pc of electrodes 25x25



## COLLET CHUCKS WER

for electrodes of circular profile and tube electrodes



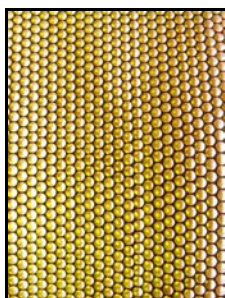
**WER16-ITS**

Collet chuck for collets ER16  
Axial alignment max. error up to 0,002  
Material INOX, hardened 54 °HRC  
Nut is made of case-hardening steel



**WER32-ITS**

Collet chuck for collets ER32  
Axial alignment max. error up to 0,002  
Material INOX, hardened 54 °HRC  
Nut is made of case-hardening steel



# Ионекс

Тольятти: (8482) 25-82-40, (8482) 25-82-85, (927) 775-49-65, (906) 128-12-68, [tlt@ionexedm.ru](mailto:tlt@ionexedm.ru)  
Москва: (499) 782-61-17, (916) 627-56-24, (926) 300-12-42, [msk@ionexedm.ru](mailto:msk@ionexedm.ru)  
Томск: (3822) 23-16-80, (909) 543-16-80, [tomsk@ionexedm.ru](mailto:tomsk@ionexedm.ru)

[www.ionexedm.ru](http://www.ionexedm.ru)

## ND50 – tilting board with indexing



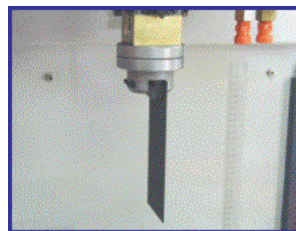
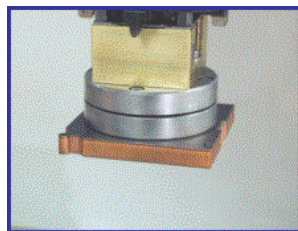
**ND50 Q26**

For easy gripping and setting of electrode angle,  
for example when machining tunnel inflows.  
The system is equipped with hydraulic brake so as to provide for required position.  
Scale with indexing by 1° makes angle positioning easy and fast.  
Electrodes are clamped into the prismatic hole 15x15mm.  
The angle is possible to set on a scale 0° - 160°. Max. load: 5kg

## NDU5 – universal tilting board



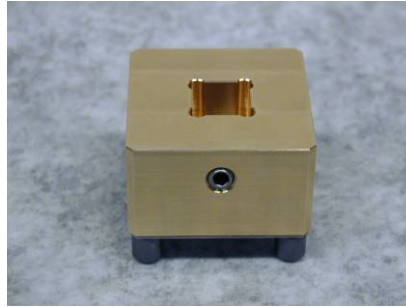
Makes electrode aligning easier – plane, perpendicularity.  
Electrodes and different adapters can be fastened to the board, or  
collet chuck ER32.  
Board is fastened to pallets ITS50 WT-Uniplatte.  
Pitch of fixing holes for screws M6 is 40mm  
Setting range:  $\pm 1^\circ$   
Max. load: 5kg



## BRASS PALLETS ITS50



WT-Uniplatte



WT-Prisrund 15



WT-Prisrund 26



WT-Unihalter 10



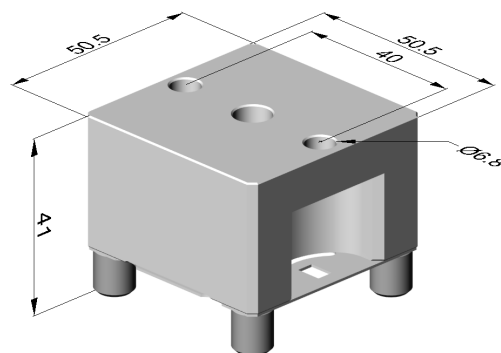
WT-Unihalter 20

WT 001.000

Uniplatte



Paleta ITS50  
EN AW7075 slitina AL

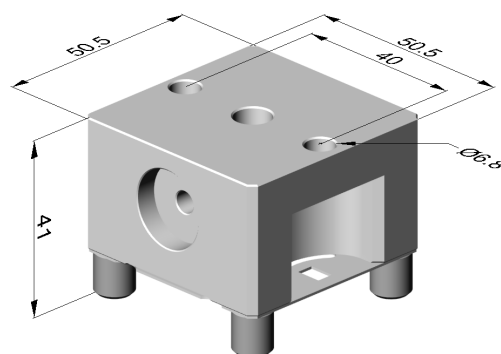


WT 001.100

Uniplatte



Paleta ITS50  
EN AW7075 slitina AL  
EWIS

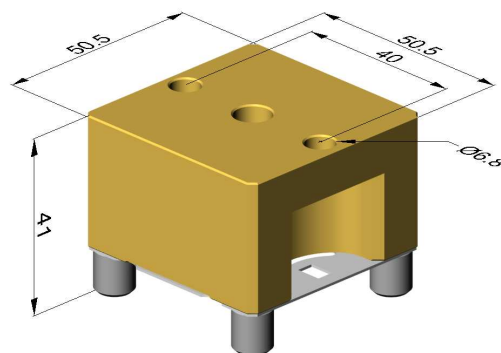


WT 001.800

Uniplatte



Paleta ITS50  
MS58 mosaz

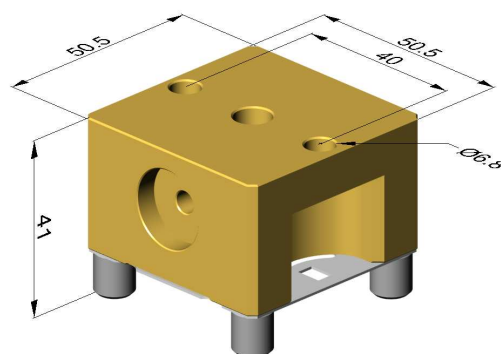


WT 001.900

Uniplatte



Paleta ITS50  
MS58 mosaz  
EWIS

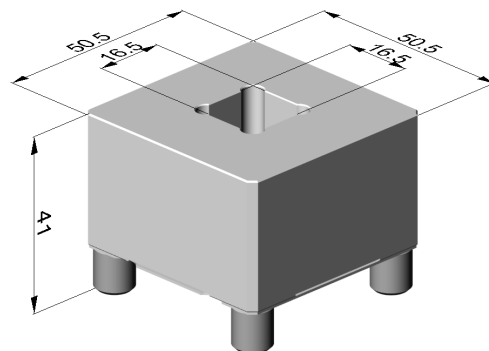


WT 002.000

Prisrund 15



Paleta ITS50  
EN AW7075 slitina AL

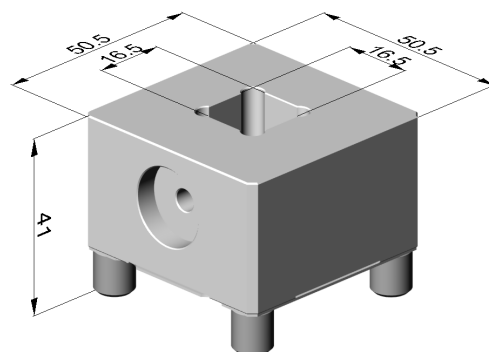


WT 002.100

Prisrund 15



Paleta ITS50  
EN AW7075 slitina AL  
EWIS

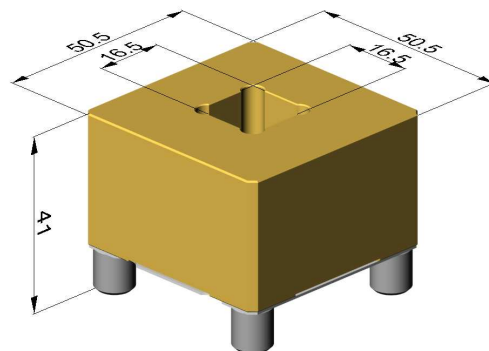


WT 002.800

Prisrund 15



Paleta ITS50  
MS58 mosaz

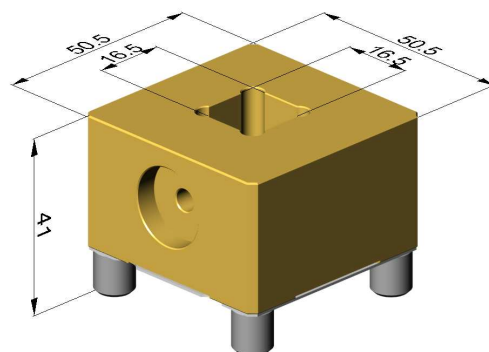


WT 002.900

Prisrund 15



Paleta ITS50  
MS58 mosaz  
EWIS

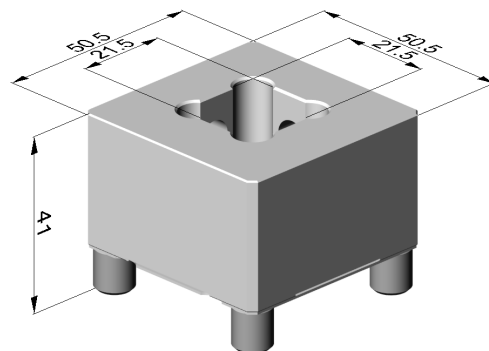


WT 003.000

Prisrund 20



Paleta ITS50  
EN AW7075 slitina AL

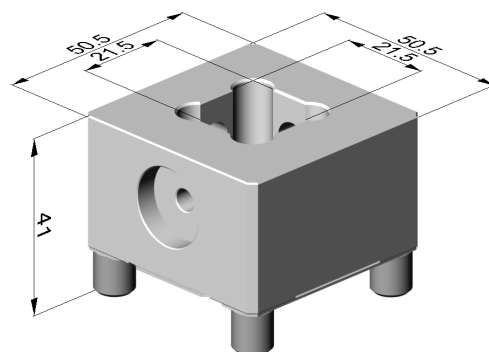


WT 003.100

Prisrund 20



Paleta ITS50  
EN AW7075 slitina AL  
EWIS

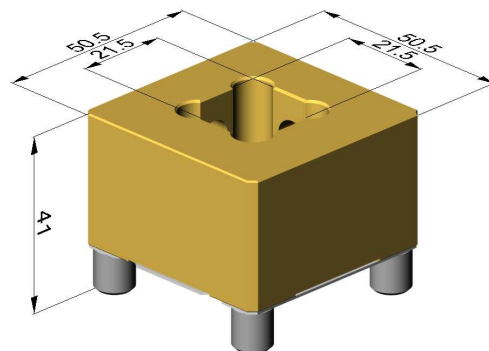


WT 003.800

Prisrund 20



Paleta ITS50  
MS58 mosaz

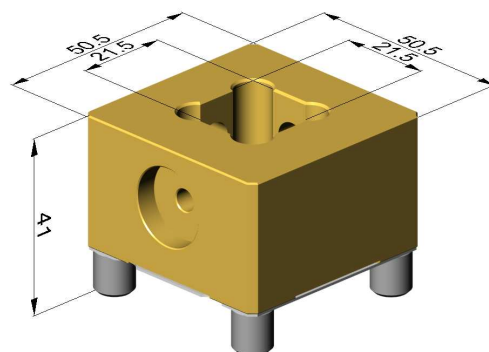


WT 003.900

Prisrund 20



Paleta ITS50  
MS58 mosaz  
EWIS

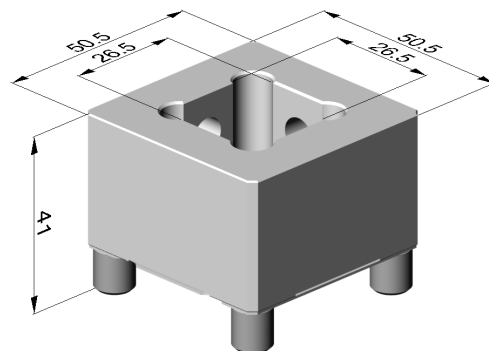


WT 004.000

Prisrund 26



Paleta ITS50  
EN AW7075 slitina AL

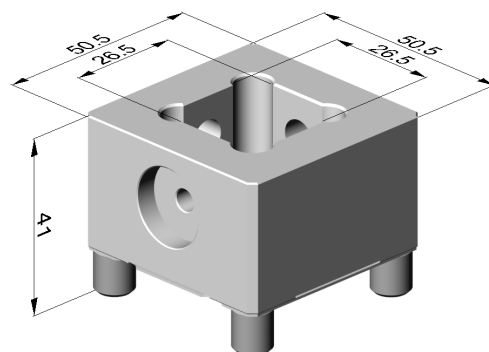


WT 004.100

Prisrund 26



Paleta ITS50  
EN AW7075 slitina AL  
EWIS

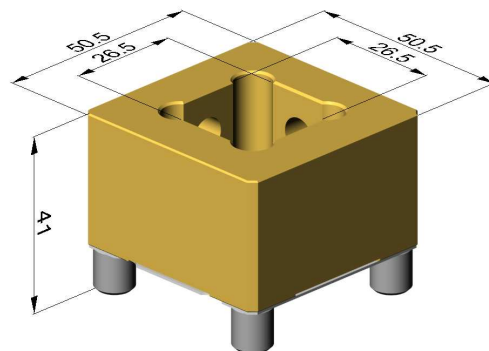


WT 004.800

Prisrund 26



Paleta ITS50  
MS58 mosaz

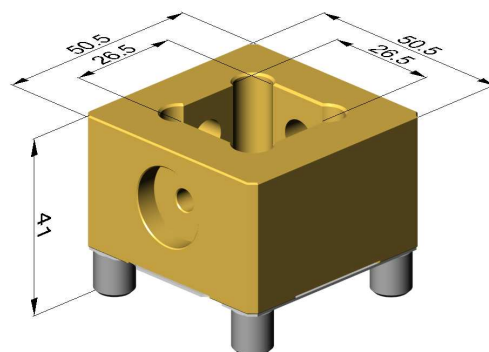


WT 004.900

Prisrund 26



Paleta ITS50  
MS58 mosaz  
EWIS

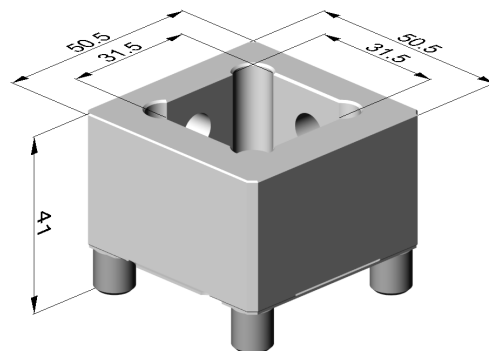


WT 005.000

Prisrund 30



Paleta ITS50  
EN AW7075 slitina AL

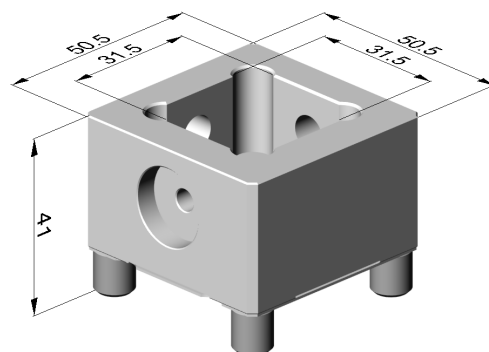


WT 005.100

Prisrund 30



Paleta ITS50  
EN AW7075 slitina AL  
EWIS

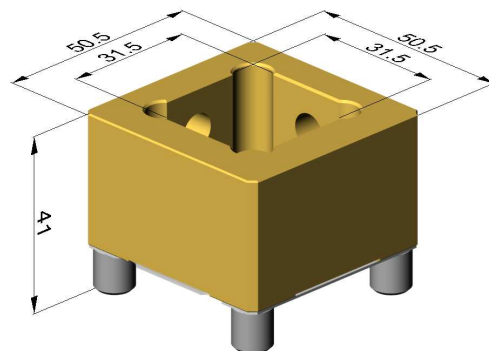


WT 005.800

Prisrund 30



Paleta ITS50  
MS58 mosaz

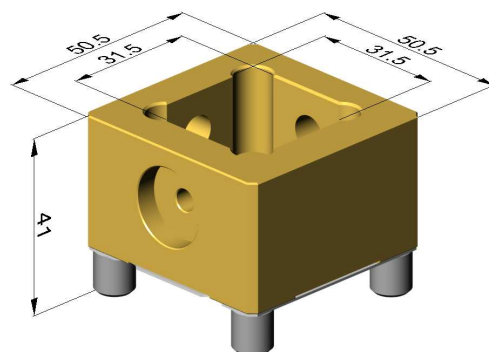


WT 005.900

Prisrund 30



Paleta ITS50  
MS58 mosaz  
EWIS



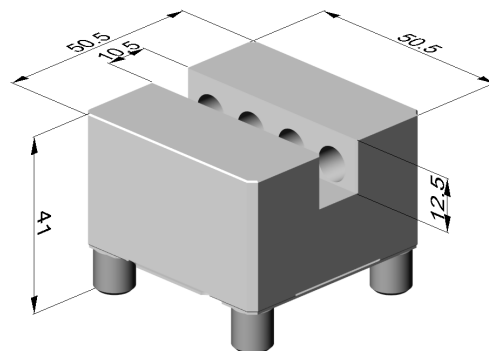


WT 006.000

Unihalter 10



Paleta ITS50  
EN AW7075 slitina AL

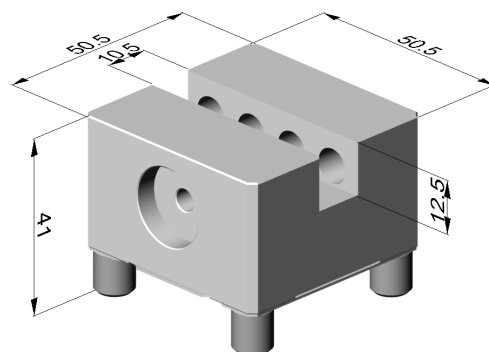


WT 006.100

Unihalter 10



Paleta ITS50  
EN AW7075 slitina AL  
EWIS

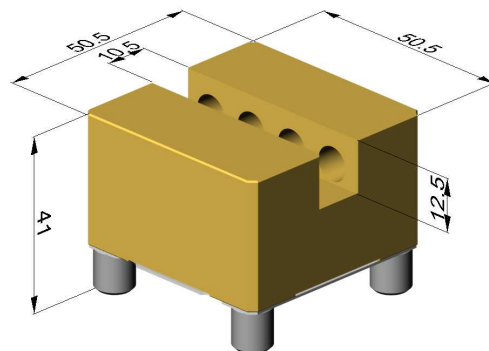


WT 006.800

Unihalter 10



Paleta ITS50  
MS58 mosaz

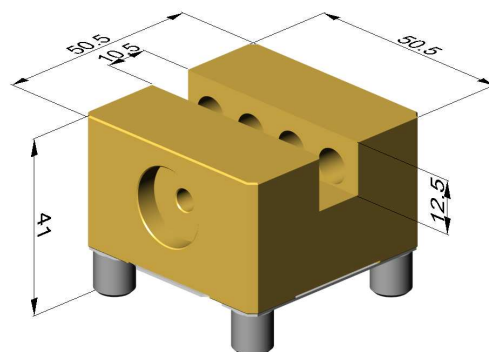


WT 006.900

Unihalter 10



Paleta ITS50  
MS58 mosaz  
EWIS

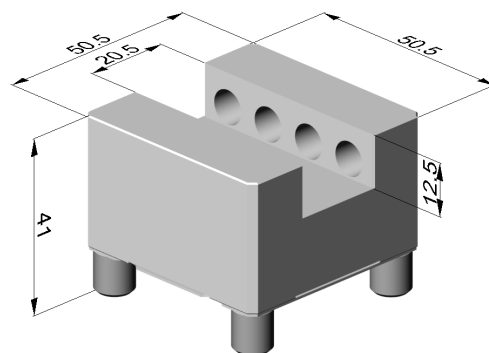


WT 007.000

Unihalter 20



Paleta ITS50  
EN AW7075 slitina AL

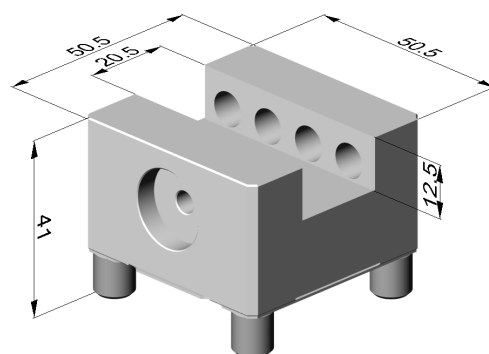


WT 007.100

Unihalter 20



Paleta ITS50  
EN AW7075 slitina AL  
EWIS

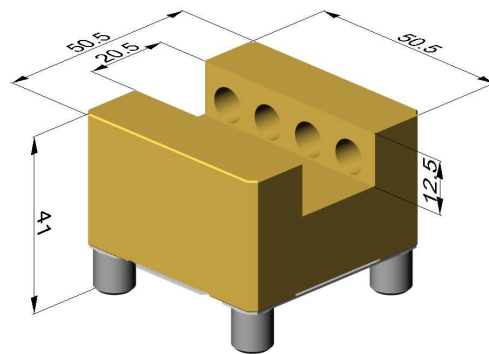


WT 007.800

Unihalter 20



Paleta ITS50  
MS58 mosaz

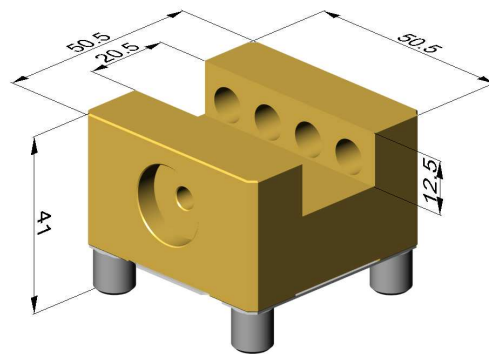


WT 007.900

Unihalter 20



Paleta ITS50  
MS58 mosaz  
EWIS

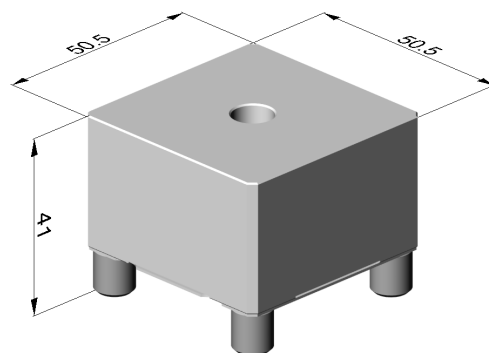


WT 008.000

Uniblack



Paleta ITS50  
EN AW7075 slitina AL

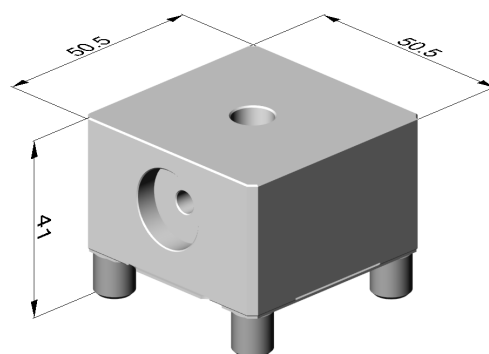


WT 008.100

Uniblack



Paleta ITS50  
EN AW7075 slitina AL  
EWIS

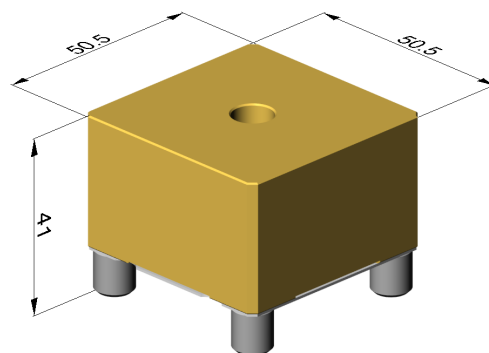


WT 008.800

Uniblack



Paleta ITS50  
MS58 mosaz

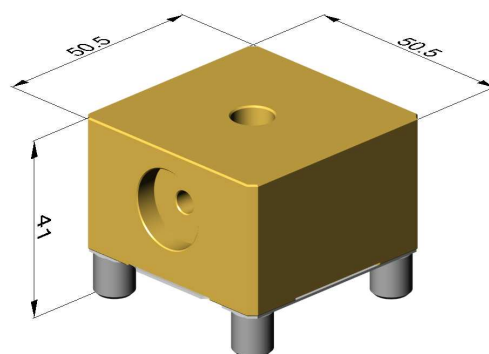


WT 008.900

Uniblack



Paleta ITS50  
MS58 mosaz  
EWIS

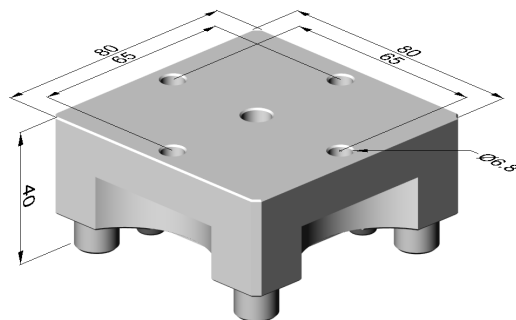


WT 010.000

Uniplatte 80



Paleta ITS50  
EN AW7075 slitina AL

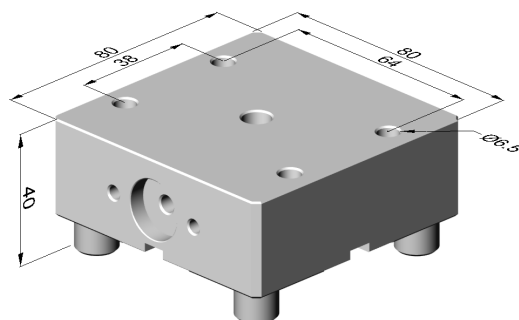


WT 010.100

Uniplatte 80



Paleta ITS50  
EN AW7075 slitina AL  
EWIS/Zwicker

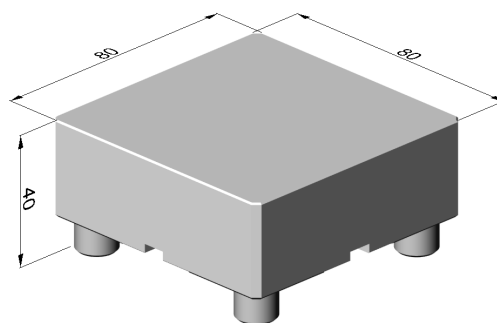


WT 014.000

Uniblack 80



Paleta ITS50  
EN AW7075 slitina AL

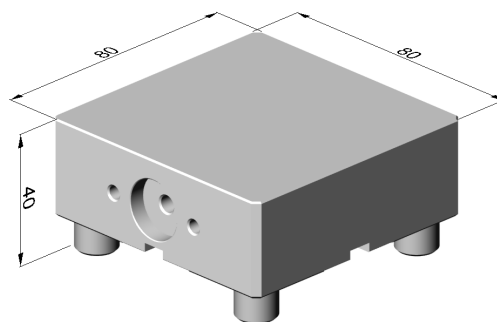


WT 014.100

Uniblack 80



Paleta ITS50  
EN AW7075 slitina AL  
EWIS/Zwicker

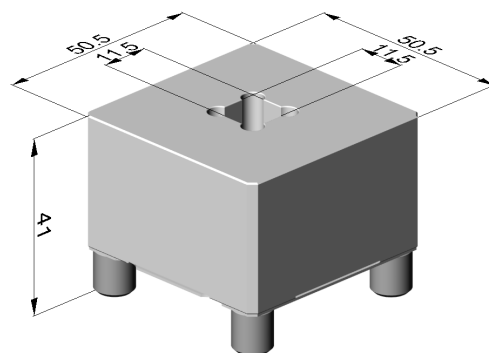


WT 0011.000

Prisrund 10



Paleta ITS50  
EN AW7075 slitina AL

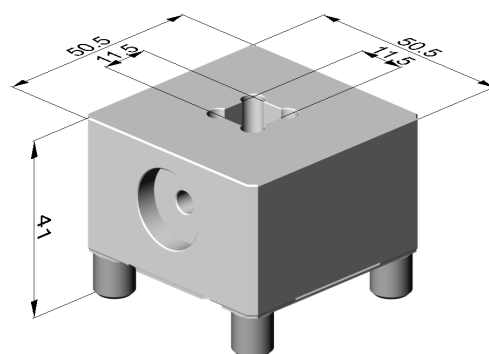


WT 011.100

Prisrund 10



Paleta ITS50  
EN AW7075 slitina AL  
EWIS

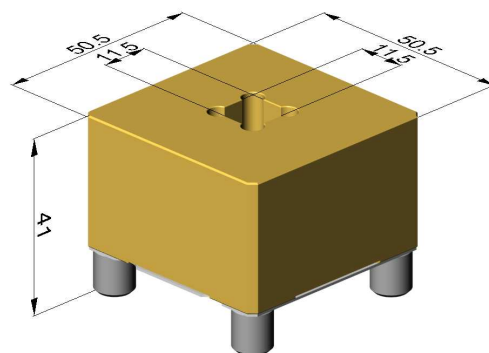


WT 011.800

Prisrund 10



Paleta ITS50  
MS58 mosaz

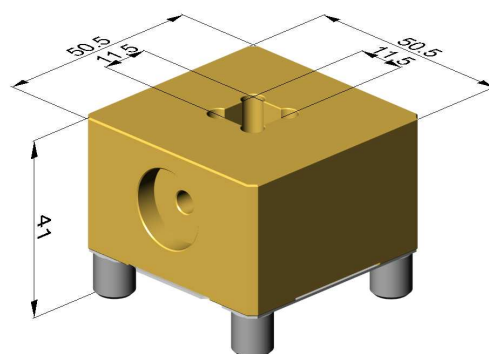


WT 011.900

Prisrund 10



Paleta ITS50  
MS58 mosaz  
EWIS

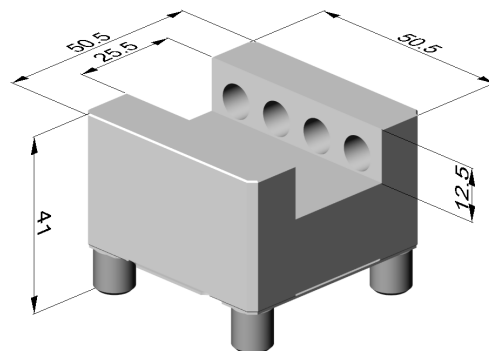


WT 012.000

Unihalter 25



Paleta ITS50  
EN AW7075 slitina AL

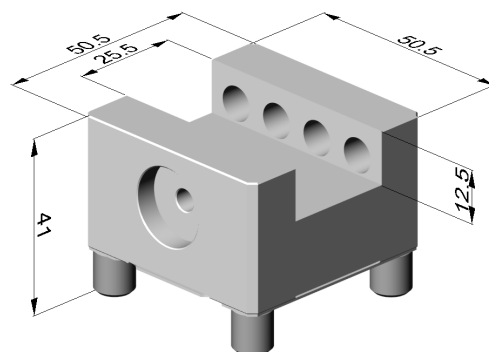


WT 012.100

Unihalter 25



Paleta ITS50  
EN AW7075 slitina AL  
EWIS

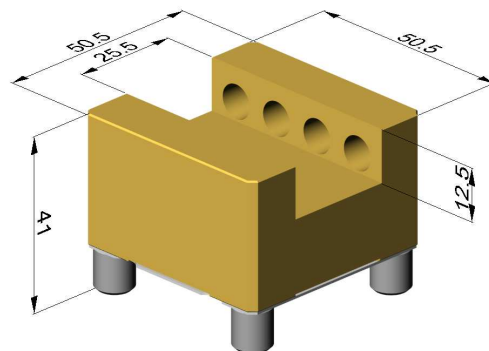


WT 012.800

Unihalter 25



Paleta ITS50  
MS58 mosaz

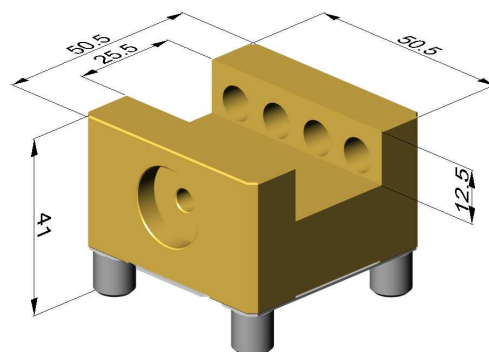


WT 012.900

Unihalter 25



Paleta ITS50  
MS58 mosaz  
EWIS



## BRASS PALLETS ITS50 + BOX16

Box made of PP with handrails for safe handling



WT-Uniplatte + BOX16



WT-Prisrund 15 + BOX16



WT-Prisrund 26 + BOX16



WT-Unihalter 10 + BOX16



WT-Unihalter 20 + BOX16